



KOBE JAPANESE PROGRAM

JANUARY SESSION Discover the Kobe Area and Japan—Australia つながり!

ONLINE 6th - 27th January 2021

The Kobe Japanese Program (KJP) is designed for undergraduate or graduate students with upper elementary Japanese language skills.

The focus of the course is Japanese Language and Area Studies including culture and society, based on the Kobe and Hyogo area, and its links to Australia.

This year the course will be conducted entirely online, utilizing various live teaching methods, to provide the most interactive learning experience possible.

Requirements:

- ◆ Undergraduate or graduate students enrolled in Australian Universities
Students from universities in other countries may enroll so long as they are aware the course content is catered to Australian students.
- ◆ Level: Upper Elementary, completed Genki 1 level or equivalent
- ◆ Internet connection, computer / mic / headset, and appropriate study environment

Capacity: 30

CONTENT & HOURS

* Program content subject to change

1. JAPANESE LANGUAGE <36 hours>

2hr Class + 1hr Tutorial × 12 days

The course will review grammar and vocabulary from Genki 1 level, and introduce new grammar points from Genki 2. Students will begin preparing for the final presentation in the latter half of the course.

Classes will be conducted 9:00~11:00AM JST by native Japanese instructors. With less than 12 students per class, we promote more communicative, hands-on learning.

Students will have the opportunity to apply their Japanese skills in tutorials, which they may choose to take before/ after real-time classes according to their time zone.

- ◆ Practical conversation
- ◆ Introduction of important daily life vocabulary
- ◆ Texts related to area studies
- ◆ Preparation leading up to presentation

2. AREA STUDIES <12 hours>

2hr Session × 6

Focusing on Kobe City and Hyogo prefecture, students will gain insight into Japanese culture, traditional handicrafts, industry & society.

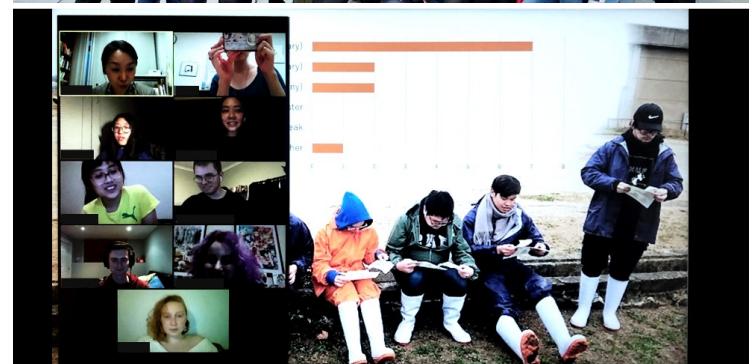
Classes will take place outside a classroom setting, each session featuring a real-time Q&A session.

- ◆ Virtual tours
- ◆ Guest lecturers
- ◆ Topic examples (subject to change): Kobe City, Arima Onsen, Sake brewery, Tea Ceremony, Australia-Japan relations, Disaster Prevention, Dialects, Agriculture

3. EXTRACURRICULAR ACTIVITIES

Outside classes, the program offers organic interaction with local Kobe university students.


- ◆ A buddy system for personal communication
- ◆ Student exchange and club activities (eg. Cooking, origami)



PROGRAM SCHEDULE

JANUARY 2021

* The program content may be subject to change

	MON	TUES	WED	THUR	FRI	SAT	SUN
	4th	5th	6th	7th	8th	9th	10th
AM			Orientation	Japanese 1	Japanese 2	Area Studies 1 Virtual Tour	
PM						Exchange Party	
	11th	12th	13th	14th	15th	16th	17th
AM	Japanese 3	Japanese 4	Area Studies 2 Virtual Tour	Japanese 5	Japanese 6	Area Studies 4 Disaster	
PM					Area Studies 3 Culture		
	18th	19th	20th	21st	22nd	23rd	24th
AM	Japanese 7	Japanese 8	Area Studies 5 Guest Lecture	Japanese 9	Japanese 10	Area Studies 6 Industry	
PM							
	25th	26th	27th	28th	29th	30th	31st
AM	Japanese 11	Japanese 12	Presentation Closing Ceremony	 AM classes 9:00~11:00 Japan Standard Time.			
PM							

ASSESSMENT CRITERIA



Pass	S	100-90
	A	89-80
	B	79-70
	C	69-60
Fail	F	59-0

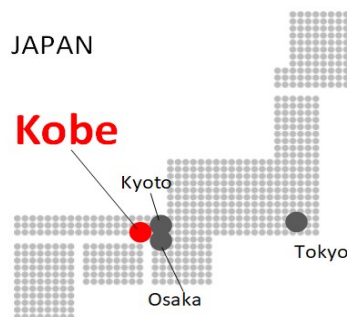
Grades are assessed by Attendance & class participation (30%), Japanese language assignments (40%), Area studies Report (20%) and final presentation (5%)

TRANSCRIPT/CERTIFICATE



Upon completion of the course, participants will receive an evaluation transcript, and those with passing grades will receive a certificate of completion. Whether points for non-credited courses can be transferred as credit depends on your university. Please consult with your home university in advance.

JAPAN



IMPORTANT DATES



Applications open	1st Oct, 2020
Application close	31st Oct, 2020
Offer of acceptance	Early Nov, 2020
Payment Due	20th Nov, 2020
Program starts	6th Jan, 2021
Program ends	27th Jan, 2021

FEES



55,000 JPY (∴ 700AUD)

Your placement will be confirmed upon payment by bank transfer by 20th Nov 2020.

APPLICATION



Please send the following application documents by email to cie-winter@edu.kobe-u.ac.jp

1. Application Form
2. Copy of your Student ID card
3. Photograph (Shoulders and above)

DEADLINE Saturday 31st Oct 2020

Find the forms on our website



ENQUIRIES

Kobe University
Center for International Education
cie-winter@edu.kobe-u.ac.jp
 Tel: +81-78-803-5265
 Fax: +81-78-803-5289

